

Situated in Halifax, West Yorkshire, Dean Clough is ideally located between Manchester and Leeds, and served by all major road, rail and airport services in the north of England.

#### Access by road

M62, Junction 24, A629 from either Manchester or Leeds. A58 from other destinations east and west. A647 from Bradford. A629 from Skipton and Keighley (north) and Huddersfield (south). Once in the vicinity of Halifax follow the brown tourist signs for Dean Clough Mills.

For those travelling by bus, Halifax Bus Station is a five-minute walk from Dean Clough.

#### Parking

Short Stay parking is available on the upper level of the Main Reception Car Park. Long stay is accessed via Gate 9. Disabled parking bays are clearly indicated.

#### Access by rail

Halifax has good connections with Manchester and Leeds Intercity services to London, Glasgow and Edinburgh. The station is a ten-minute walk from Dean Clough.

#### Airports

Halifax has easy access to both Manchester and Leeds/Bradford International airports.

#### Access for the disabled

Wheelchair access and disabled parking for D Mill public areas is available via Gate 1. Please telephone Dean Clough Reception on 01422 250250 before your journey for instructions, if at all possible.

#### Group visits

Please book for group visits. For further information please contact Galleries Reception on 01422 250250.

#### Refreshments

Choose either the excellent Design House Restaurant for lunch or evening meals (telephone 01422 383242 for reservations) or The Viaduct Café Bar for delicious light meals, sandwiches and coffee throughout the day.

#### Business accommodation

For further information on high quality business accommodation (from 15 – 10,000 square metres) telephone 0800 073 0004 and ask to speak to a lettings advisor.

Dean Clough has extensive conference facilities for hire. Meetings for 6 to 320 people can be accommodated. Telephone reception on 01422 250250 for a full conference brochure.

#### Other facilities

##### Post Office:

Access via Gate 1. Open Monday – Friday, 8.00am – 12pm, 3.00pm – 6.00pm

##### Pam's Shop:

Access via Gate 1. Newspapers, magazines, soft drinks and confectionery  
Open Monday – Friday,  
7.30am – 6.00pm.

##### Fitness First Gymnasium:

Access via Gate 9. Open 7 days a week.  
Telephone 01422 341341

##### Travelodge Hotel:

Access via Gate 9. Situated on site is a 52 room Travelodge Hotel.  
Reservations: 0870 085 0950

##### Taxis:

Crossleys Taxis are situated opposite Gate 1.  
Telephone 01422 350789/364662.



#### Admission is free

The Dean Clough Galleries are open  
**10.00am – 5.00pm everyday**  
(except Christmas Day, Boxing Day and New Years Day)

For further information contact:

##### The Dean Clough Galleries

Dean Clough  
Halifax  
West Yorkshire  
HX3 5AX

Telephone  
**01422 250250**

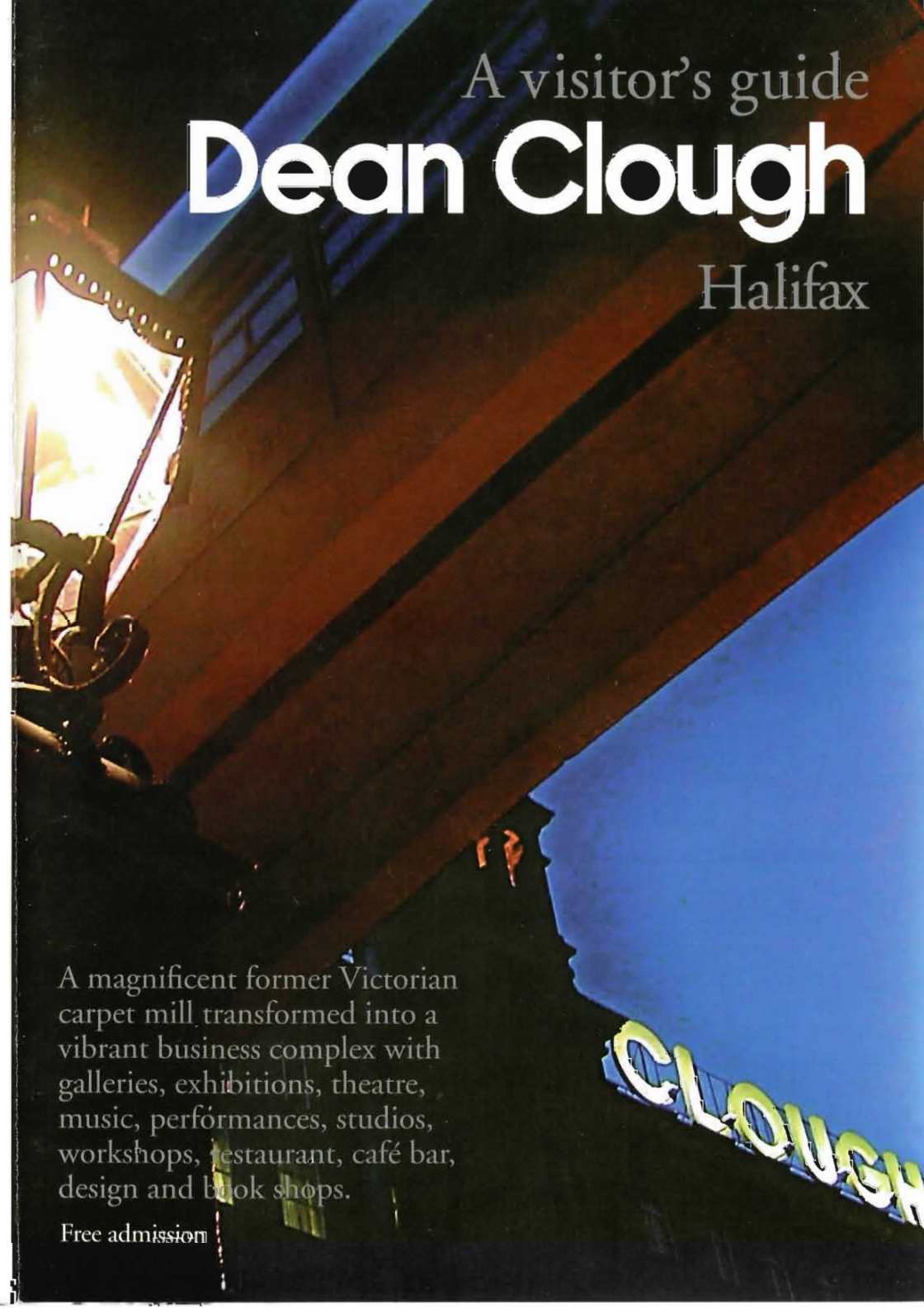
Fax  
**01422 255250**

E Mail  
**info@deanclough.com**

Web Site  
**www.deanclough.com**

The Dean Clough Galleries are fully sponsored by Dean Clough Limited and directed and managed by The Design Dimension Educational Trust.

# A visitor's guide Dean Clough Halifax



A magnificent former Victorian carpet mill transformed into a vibrant business complex with galleries, exhibitions, theatre, music, performances, studios, workshops, restaurant, café bar, design and book shops.

Free admission



Dean Clough in Halifax is a magnificent complex of 19th century mills: a centre for business, the arts, design and education. Visitors are welcome to explore the constantly changing exhibitions of contemporary art in the seven Dean Clough Galleries. The acclaimed Design House Restaurant, the Viaduct Café Bar and The Design Shop (with its unique range of craft items) are also open throughout the week. Other items of regular interest include The Viaduct Theatre (home to the award winning Northern BroadSides); The IOU Studio; artists' studios, and workshops.

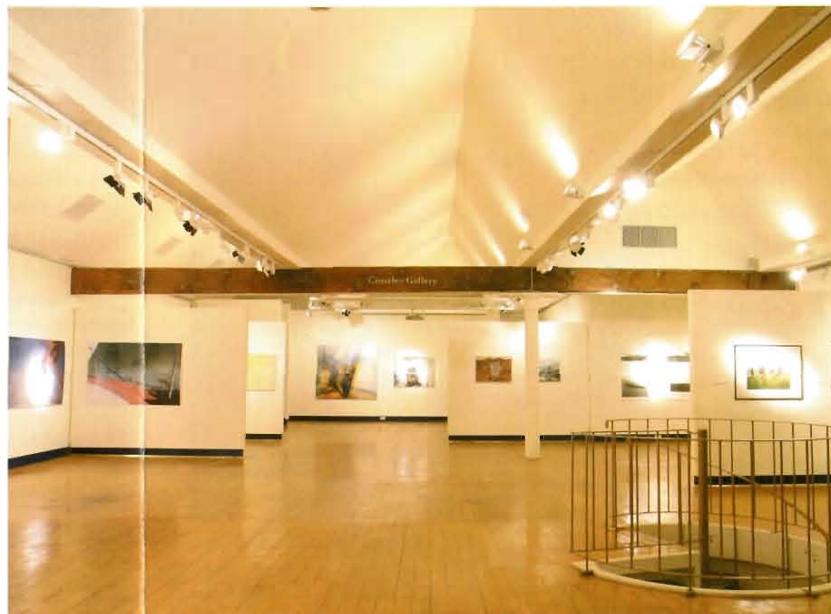
Built between 1840 and 1870 by the Crossley family, Dean Clough originally housed one of the world's leading carpet factories. By 1982 Crossley Carpets had ceased production. A year later the empty and derelict buildings were bought by Sir Ernest and Jeremy Hall. Since then the mills have been transformed into a thriving complex of enterprise and creativity, a 'practical utopia'.

A wonderful site to explore, Dean Clough's sensitively restored Victorian architecture has a unique and statuesque beauty and a history rich with local and national associations.

The Dean Clough complex



The Crossley Gallery: 'L'VN2D - Beyond Landscape'



## Things to do and see

**Bookshop**

**Café Bar**

**Fine Victorian Architecture**

**Galleries**

**IOU Studio**

**Music**

**Restaurant**

**The Design Shop**

**Theatre**

**Workshops**

Open 10am – 5pm  
everyday  
**Free admission**



The Photography Gallery: Antonio Andreas



The Foyer Gallery: Daniel Paulo 'The Ingleborough Series'

*"The rebirth of Dean Clough didn't begin with a calculation but with a leap of imagination; a dream of a practical utopia in which the artist, the 'Awakener' would live.*

*"Everyone must begin to trust their dreams because out of that trust is born the artist, and the artist is the role model for the entrepreneur we now need."*

From the Arts Council of England RSA Annual Lecture 1996  
'In Defence of Genius' by Sir Ernest Hall.



Sir Richard Young Gallery: Crafts Council Collection



# The Arts & Design at Dean Clough

For information on forthcoming exhibitions, events, workshops and theatrical performances telephone 01422 250250.

**Box Office for music and theatre 01422 255266**

## Exhibitions

The Dean Clough Galleries show an exciting programme of contemporary art and design exhibitions by national and international artists. The majority of work exhibited is for sale. An Arts Council England/HFC Bank scheme is available that enables artwork to be purchased by interest-free instalments.



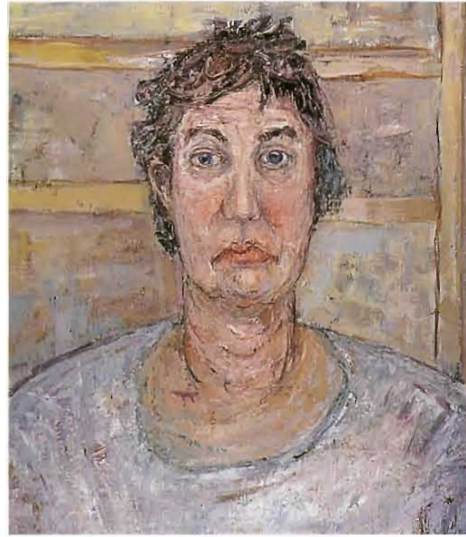
Jeff Nuttall 'Bull' from The Permanent Collection



Derek Hyatt 'Entrance to the Moor' from The Permanent Collection

## The Permanent Collection

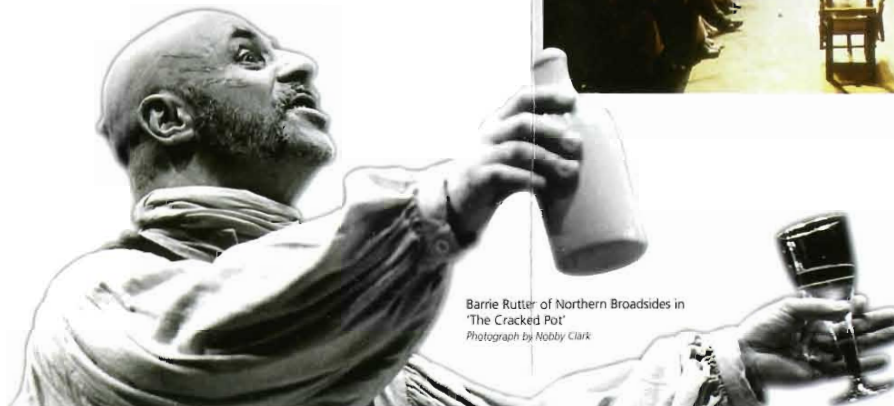
The collection comprises over 400 works of paintings, drawings, prints, photography and sculpture mainly by northern artists collected since 1985. Many of these can be found permanently displayed throughout the site.



Val Robinson 'Portrait of a Housewife' (detail) from The Permanent Collection.

## Theatre

The atmospheric 320-seat Viaduct Theatre frequently hosts events that have been fêted both nationally and internationally. It is used by the award-winning Northern Broadsides to premiere its acclaimed series of Shakespearean productions as well as other national touring companies such as Hull Truck Theatre Company.



Barrie Rutter of Northern Broadsides in 'The Cracked Pot'  
Photograph by Nobby Clark

## Music at Dean Clough

The Crossley Gallery has become recognised as one of the key jazz venues in the region where the emphasis is on a warm appreciation of the music. Dean Clough's hand-built Fazioli piano has thrilled to the likes of Jessica Williams, Stan Tracey, Fred Hersch, Jason Rebello, Django Bates and Matthew Bourne. Other international and leading national artistes have included Norma Winstone, Kenny Wheeler, Guy Barker, Bobby Wellins, Martin Taylor, Stan Sulzmann, Gerard Presencer and Tina May.

The Viaduct Theatre features an occasional series of concerts by The North of England Concert Orchestra; while the more intimate acoustic of the Crossley Gallery has attracted international artistes such as Marat Bisengaliev, Vanya Milanova, Ravi Shanker and Matthew Barley. Pianists have included Katia Labeque, Angela Brownridge and Dean Clough's own Chairman, Sir Ernest Hall.

If you wish to be kept informed of coming events then join our mailing list via our web site or by telephoning the box office on 01422 255266.



The Viaduct Theatre  
Photograph by Nobby Clark



Gerard Presencer Quartet 'in concert'

## IOU Studio

The IOU Studio is the home of internationally renowned IOU. The company creates a variety of work including indoor and outdoor touring theatre, site-specific events, installations, video interactive digital work, training and workshops.

Visitors can explore the collection of extraordinary mechanical props, vehicles and costumes from nearly 30 years of IOU productions. Of particular interest to students and researchers is information on how the company creates its work, including an extensive archive of photographs, video, posters and articles.

Exhibitions and archives are available to view at advertised opening times and by appointment. For further information and to arrange your visit, please telephone 01422 369217 or e-mail [info@ioutheatre.org](mailto:info@ioutheatre.org) Also see [www.ioutheatre.org](http://www.ioutheatre.org)



IOU: Transports of Delight Photograph by David Wheeler



## Artists' Studios and Workshops

An artistic community of more than 20 artists and designers work in on-site studios exhibiting regularly in the galleries and the Design Shop. Open studio days provide the public with access to the group with special events such as art performances, talks and workshops given throughout the year.

The Dean Clough Galleries offer a programme of talks, lectures and hands-on workshops (including life-drawing classes) throughout the year. Aimed at all levels of ability and interest from the beginner to teachers and practitioners in the arts, the varied programme offers opportunities for training, leisure and contact with practising artists and academics.

*(Access to the artists and studios is strictly by appointment only).*



The Design Shop

## The Design Shop

The Design Shop houses a constantly changing display of specially selected work by contemporary designers and craft makers, design-led products and interior accessories. Jewellery, wood, ceramics, lighting, glass, furniture and textiles are supported by an exceptional range of greetings cards, hand-made paper, specialist art and design magazines, artists' prints and photographs. Fantastic opportunities to purchase special gifts and stylish home accessories.

## The 20th Century Design Collection @ Dean Clough

At the core of the 20th Century Design Collection is a selection of furniture created by designers working in Britain between 1930 - 1970. The selection, entitled The Hunger for Excellence, is a re-evaluation and illustration of British culture renewing itself after 1945. The 20th Century Design Collection is curated by Morice Ambler. For more details visit [www.deanclough.com](http://www.deanclough.com).

## Be a Friend of the Dean Clough Galleries!

Membership entitles you to regular information about the exhibition, theatre and music programme, priority invitations to exhibition previews, selected events and conferences. Special gallery and studio tours, artists talks, priority bookings for theatre performances, music concerts, workshops and conferences. Discount on certain theatre and concert events, the purchase of artworks, books, and on the cost of room bookings for meetings or special events. For further information telephone 01422 250250.

## Lectures

The Design Dimension series of lectures at Dean Clough has led to talks by the likes of Wally Olins and Lord Richard Rogers, but also leading business figures such as Christopher Garnett (GNER), Sir Stuart Hampson (John Lewis), Andy Hornby (HBOS) and Alan Langlands (NHS). Speakers from the creative sector have included Jeff Banks, Timothy O'Brien, Richard Wentworth, and Deborah Bull. The Focus on Food Lectures have seen many of the UK's leading chefs lecture here, including Marguerite Patten, Gary Rhodes, Antony Worrall Thompson, Prue Leith, Ross Burden and Loyd Grossman.

## The Book Shop

One of the few spaces in the UK dedicated to the display and sale of highly collectable artists books and fine press publications, the Book Shop frequently offers items by the likes of Sol LeWit, Ron King, and Richard Long. Such work complements the International Contemporary Artists' Book Fair held annually at Dean Clough. Details from Chris Taylor, Senior Lecturer in Fine Art, University of Leeds. [c.a.taylor@leeds.ac.uk](mailto:c.a.taylor@leeds.ac.uk).

## Viaduct Café Bar

Great coffee, hot and cold sandwiches, soup, salads, cakes, soft drinks, bottled beers and wine. Enjoy the informal atmosphere for socialising, meetings and get-togethers or just relax with the sounds of jazz whilst reading the daily newspapers.

The café offers a take-away service which can be pre-ordered. It also provides on-site buffet catering for Dean Clough's meeting rooms and conferences, in addition to front of house facilities for Viaduct Theatre performances and special events.

Open 9.00am - 5.00pm Mon - Sat (drinks till 7.00pm Fridays). 10.00am - 5.00pm Sun. Open until 11.00pm on theatre and jazz nights.



Viaduct Café Bar

## Design House Restaurant

A superb culinary experience, the Design House Restaurant offers value for money and excellent service in spectacular surroundings.

Relax whilst the award-winning restaurant chefs create exquisite dishes utilising the highest quality ingredients served at the peak of freshness.

With a bar area licensed to midnight enjoy an excellent selection of fine wines and numerous speciality beers from around the world.

In addition to the more private and romantic rendezvous, the Design House can cater for most large events including conferences, weddings and private parties.

Open Mon - Fri, 12.00 noon - 2.30pm (lunch) and Mon - Sat, 6.00pm - 9.30pm (evening meals)



The Design House Restaurant

## Arts agencies

### Arts & Business Yorkshire

Arts & Business Yorkshire promotes and facilitates creative partnerships between business and the arts. As part of the national Arts & Business network, it advises the arts on their business partnerships and manages a range of programmes and services, including the New Partners investment programme. Its commercial wing also offers arts based corporate training, arts-led sponsorship consultancy and a range of creative solutions for business based on arts practice. [www.artsandbusinessyorkshire.org.uk](http://www.artsandbusinessyorkshire.org.uk) Telephone 01422 367860

### Design Dimension

Design Dimension is dedicated to raising awareness and understanding of the importance of design in the arts, business, education and training. It achieves this by developing design-led initiatives in schools, colleges, business and arts organisations, nationally and through the strategic development, coordination and management of The Dean Clough Galleries exhibition and conference programme. [www.designdimension.org](http://www.designdimension.org) Telephone 01422 383191

### Metier

Metier is a national charity that aims to support change and generate opportunities to give everyone an equal chance to work in the creative and cultural sector. Metier works in partnership with employers, trainers and employer associations to develop work programmes that remove barriers to employment. Telephone 01422 381618

### Northern Orchestral Enterprises Ltd

Northern Orchestral Enterprises LTD (NOEL), founded by John Fryce-Jones, is a registered charity specialising in music education. It offers a whole range of projects both in and out of school and runs the Yorkshire Youth Orchestra and Choir. It also manages the work of the North of England Concert Orchestra. [enquiries@northernorchestralenterprises.co.uk](mailto:enquiries@northernorchestralenterprises.co.uk) Telephone 01422 330533

### The Quilters' Guild of the British Isles

The Quilters' Guild is an educational charity which promotes good practice in education; researches quilt traditions; stimulates new and established quilters to achieve high standards of work and design, and encourages international links. Telephone 01422 347669

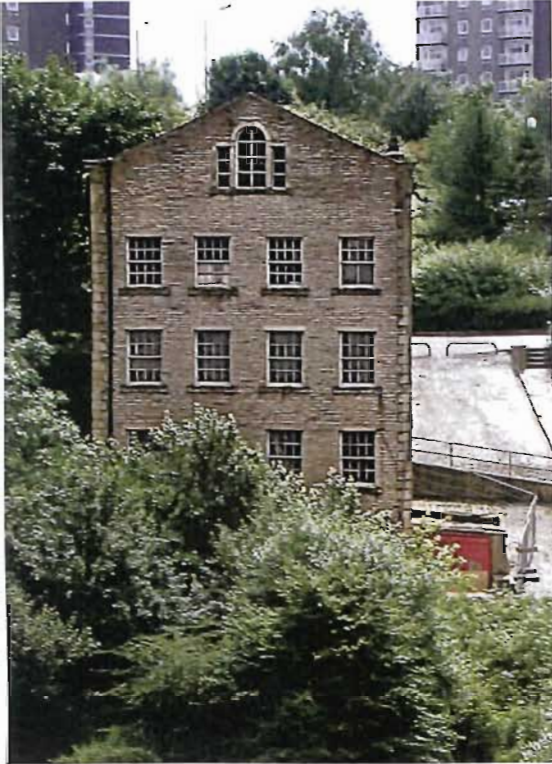
### Yorkshire Youth & Music

Yorkshire Youth & Music encourages and facilitates young people's participation in making music. All sectors of the youth community are involved in region wide projects such as the Family Funday Concerts and the Sounding Out Project. Telephone 01422 383130



# MARSHALLS MILL

## past & present

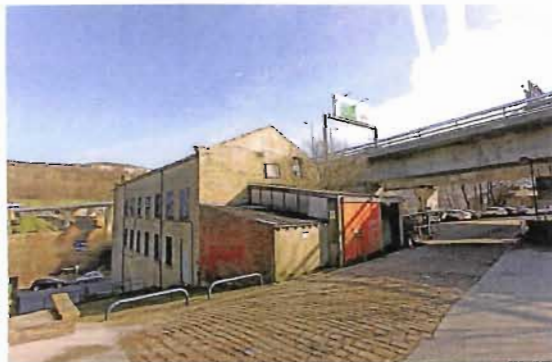


A listed building, Marshalls Mill is one of the oldest standing warehouses in Halifax and historically unusual because it was intended as a manufacturer's warehouse rather than a wool stapler's warehouse. Constructed in 1843 for John Rayner it was rented to multiple occupancy – but for some 30 years was primarily a beer house and 'practise rooms' (known variously as 'Barretts', 'The Engine House' and 'The Engineers').

Beer houses dispensed ale by the jug and were as notorious as they were numerous (Halifax had 330 at one point). Engels termed them 'dens of thieves, prostitutes and swindlers'. They were a prime casualty of the licensing restrictions associated with Lloyd George. Consequently the building housed a 'sack makers' after WW1 and - shortly after WW2 - became a family builder's premises. The latter's name (Marshalls) was retained when Dean Clough Ltd acquired the building in 1990.

The robustness of the building is testified to by its subsequent, unreconstructed use for storing delicate organ parts (...pipe organs, that is); while it even featured a Henry Moore Institute exhibition by a notable artist, Phyllida Barlow, in 1995.

Marshalls is well located within the Dean Clough site for parking and benefits from the mature landscaping around the G Mill car park (formerly the site of Whitaker's brewery). As an 'announcement building' for the main site its redevelopment is intended to promote the imaginative blend of modern efficiency and traditional quality that has been famously pioneered at Dean Clough over the last 28 years.



Since 1971 the view across the valley from Marshall's Mill has included the breathtaking but imposing Burdock Way flyover. The nearby Broad Street Mall and Leisure Centre (currently under construction) promises to be a more attractive municipal development.









# AXMINSTER MILL

## past & present

As the 1940's photograph of Crossley Carpets shows, the Axminster building was always at the centre of Dean Clough's mills and even up to the millenium was surrounded by a complex and changing array of sizeable sheds.

The largest of these sheds housed the Axminster looms which used specially-prepared, varicoloured yarn. The dyes on the yarn were steam-fixed using boilers that in the mid-19th century were located in Axminster Mill's ground floor.

Records suggest that the building dates back to 1854, although the flitched beams in the upper floors suggest it was at least modified in the mid-1860's to accommodate a laboratory. Crossleys was renowned for its innovatory prowess and the production of quality carpets meant a constant need to sample dyes and test the strength of yarns.

The Axminster Mill has been used for storage since 1983. It is conspicuous, however, as one of the few discrete buildings on site that is capable of offering a signature profile.

Axminster Mill remains at the hub of activity, being equidistant from the Travelodge Hotel and Fitness First gym to the West and from D-Mill (with its shops, dining facilities and art galleries) to the East. The benefits of being in the long-stay car park (which in the early days of the site was a dam!) are more than apparent.



The Axminster building can be seen at the bottom left of the 1940's photograph (top). The large building behind it (C-Mill) together with the sheds, chimneys and the roadside houses are all long-gone. The two arches beneath the fire escape in the middle photograph reveal the old boiler profiles. The digitally created image (directly above) is a realisation of detailed plans that exist for the future development of the nearby B-Mill.



DEAN CLOUGH

# FREE GALLERY GUIDE

Exhibitions and events at Dean Clough  
during Summer 2011

Open daily 10.00am to 5.00pm Admission FREE



Admire the meticulous work of Michael Le Count and Tony Priestman: what will ultimately be one of the world's largest Lego buildings is temporarily on show in the Upstairs Galleries...

DEAN CLOUGH was once the world's largest carpet mill. It is now home to over 100 businesses that between them employ some 4,000 people. The companies range from blue-chip corporations to self-employed individuals and are engaged in a wide gamut of activities from call centres to software development, from design to health care, and from specialist lubricants to violin bow making. On-site services include a hotel, gym and restaurant as well as a radio station, shops and – most recently – 'The Cooking School'. Dean Clough also hosts several leading theatre, music and educational organisations, some of the North's most prominent artist and one of the UK's largest private art galleries. We hope you enjoy your visit... Leave your email at reception if you'd like to be kept informed of our future programme.

## ABOUT THE GALLERY SHOWS...

### Crossley Gallery GEORGE ROWLETT: REFLECTIONS ON A DECADE

June 11th to October 2nd 2011

The work in this exhibition is available to purchase - please ask at reception for a price list.

Dean Clough is a member of the Arts Council's OWN ART scheme which offers up to £2000 interest-free credit that is repayable in equal installments over a ten month period. Details are available at The Design Shop.

A brochure that includes an appreciation of George Rowlett by Andrew Lambirth, art critic on The Spectator, is available from The Design Shop, price 50p.

George Rowlett is represented by **Art Space Gallery** - Michael Richardson Contemporary Art. London N1 8JS. [artspacegallery.co.uk](http://artspacegallery.co.uk)

George Rowlett (b. Troon 1944) began at Grimsby School of Art in the 60's and was later tutored by the likes of Euan Uglow and Frank Auerbach. His viscid paint-handling inevitably recalls the latter's earlier work but Rowlett's vivacious character and (easily overlooked) his colour fidelity mark him out as his own man. The sensuous impact of Rowlett's work shouldn't deceive anyone into thinking it lacks subtlety, technique or even restraint (understatement, well, yes - it lacks that - but not restraint). Widely exhibited and collected, it is nonetheless rare to see such an extensive array of Rowlett's canvases as here. This post-millennial retrospective mixes still-lives and floral studies from the painter's garden in Walmer with landscapes and seascapes from East Kent. The Lake District canvases (particularly Coniston Old Man and Brantwood) recall Rowlett's one-man touring show that was inspired by Ruskin and are supplemented here by more recent work from Westwater. Finally, the paintings made around the artist's East End studio in London record not only the working Thames but also sound a topical note with depictions of the mushrooming Olympic site. Our thanks go to Michael Richardson for facilitating such a fabulous and distinctive show.



Olympic Arena site progress, March winds blowing dust clouds (oil on board 36x48ins) 2009



Lilium Scheherazade and Cabbage Palm, Lutyens bench, Walmer - detail (oil on board 36x24ins) 2009



**Upstairs Galleries**  
**GARNET DORE:**  
**A PORTRAIT OF**  
**DEAN CLOUGH**

June 11th to  
 October 2nd 2011

Garnet is presently available  
 for portrait commissions.  
 Business cards are available in  
 the gallery and he can also be  
 contacted directly via  
 garnetd5@hotmail.com

It was the painter Jake Attree who introduced Garnet Dore (b. 1964, Chapelton) to Dean Clough. A relatively mature student (MA, University of East London, 2000), Garnet's natural talent for oils and portraiture instantly suggested the project at the core of this exhibition. Since Autumn 2009 he has – as a resident studio artist – been painting volunteers both from the 4,000 workers at Dean Clough and our 60,000 annual visitors. This 'obvious' idea has provoked more interaction and interest than many more elaborate 'community art' schemes. Garnet's ebullient personality has played its part in this achievement, but so too has the belated recognition that – generally – only 'posh people' get their portraits painted...



Garnet Dore at work...

**ComEd Gallery**  
**JACK PETERS: NOT**  
**MUCH WRONG**  
**WITH THAT**

June 11th to  
 October 2nd 2011

Conditions of probate mean  
 that the work in this exhibition  
 cannot be sold. Options can be  
 taken out on specific paintings,  
 however and there are aspira-  
 tions to make some items  
 available as giglee prints. Ask at  
 The Design Shop for more  
 details.

This retrospective of landscapes, figurework and sports illustrations was collated and prepared during a period when the artist, Jack Peters, had been diagnosed with an inoperable brain tumour. He died on May 10th, 2011. Two months before this he told us that he wanted this show (his first solo exhibition) "to tell the story of someone who went into art and realised it wasn't where they should be; then they went back into it... and they were fine". On the strength of juvenilia such as 'Blackpool Holiday' (featured here) Jack (b.1933) left Halifax for the Slade in 1955. Unfortunately, as he said, "I didn't know what I was doing. I had no idea". The result was that life - not art - hijacked him: National Service, marriages, children, jobs... and retirement to Yorkshire's east coast all followed. And yet Jack never stopped painting. This show, then, is a testament to a talent exploited in the spirit of enjoyment rather than competitiveness. And as Jack said of his own best work: "There's not much wrong with that, is there?"



'Lucy' (oil on canvas 2011)



The All-Weather Fourball (pen and wash)



**Link Gallery**  
**GORDON CAIN:**  
**EVENT SPACES**

June 11th to  
 October 2nd 2011

The high-quality (photography equivalent) Lambda prints in this exhibition are available as limited editions of ten, both framed and unframed.

**Photography Gallery**  
**CHARLES PECK:**  
**A DIFFERENT PLACE**

(Profits from the sales of Charles' work will be donated to PAFRAS, Positive Action for Refugees and Asylum Seekers – a cause that Charles was supportive of).

**Collection Corridors**  
**THE DEAN CLOUGH**  
**COLLECTION**

These exhibitions have all benefited enormously from the input of the technicians who have assisted with their installation. Our thanks go to Gordon de Fontenay, Cath Graham, Dee Grijak, Ben Johnson, Jamie Quirolo and Graham Wrathmell

Leeds-based, Gordon Cain (b.1947) obtained a DipAd in Sculpture at St. Martins in 1969. This formal training; his time spent wrestling with materials, and the conceptual shifts that have overtaken art practice since the 60s – are all brought to bear on Gordon's current computer-based practice that uses 3D modelling software. His high quality lambda prints show 'hypothetical spatial scenarios' that 'suggest evidence of an uncertain or unspecified labour'. They are composed of 'found' items (trees, ladders, maps, texts) and 'made' items (virtual sculptural forms that often carry 'real world' textures); but perhaps the key feature that makes these works so alive to the imagination is the absence of any protagonists.

**Photography Gallery**

11th June to 2nd October 2011

This retrospective comes too late. The photographer Charles Peck (1964-2009) worked in the Calder Valley – typically Todmorden – using a 6"x7" format Pentax. With the exception of the huge 'lily' that has graced Dean Clough's walls for the last 14 years he kept his personal work to himself: but such deeply observed imagery always deserved currency. The quality is partly down to Charles' commercial experience (in both London and Leeds) but also down to mentors like the renowned Terry Cryer, met while studying at Kitson College in the 80s. Thanks are due to Terry, to Jim Moran, to Ian at Silvertone for the superb monochrome prints – and not least to Charles' brother, Tim.

Please feel free to browse Dean Clough's Permanent Collection of works acquired over the last 25 years. The ground floor Collection Corridor now includes a series of notebook images by the renowned 'counter-cultural' artist, actor and writer Jeff Nuttall who exhibited here in the 1990's. Recent work by 'painter in residence' Doug Binder is also featured in one of the corridors leading from the Mosaic Gallery. Finally do catch The Bookshop in the Foyer and the fine collection of literary horror stories presented by North Yorkshire's Tartarus Press.



Workshop No 2 (inkjet print)

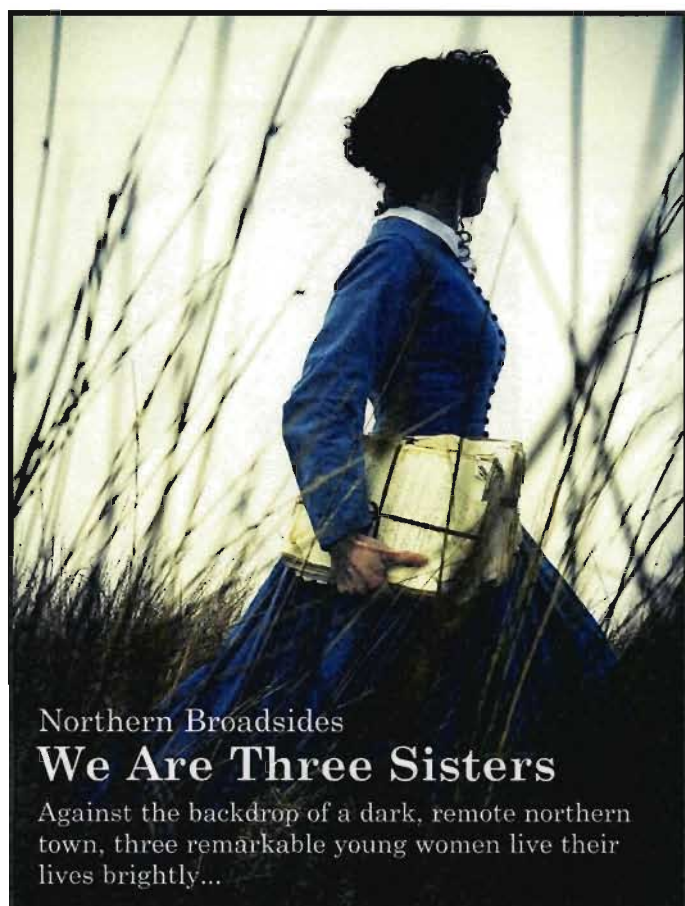


'Rhubarb' (1.6'x1.2')



Bill Brandt's 'Catch Point' - taken at Crossleys Carpers in the 1930s





## Northern BroadSides **We Are Three Sisters**

Against the backdrop of a dark, remote northern town, three remarkable young women live their lives brightly...

A new play by Blake Morrison

**Viaduct Theatre, Dean Clough**

Friday 9th to Saturday 17th September 2011 at 7.30pm  
Matinee on Sat 17th September at 2.00pm

Tickets prices £18.50 to £15.00 (concessions available)

Box: 01422 255266

Online Booking: [www.deanclough.com](http://www.deanclough.com)



Open 7 days a week, 10.00am to 4.30pm  
(last orders 4.00pm)

Exhibiting until late October: etchings and paintings by Phil Withersby + charcoal drawings by Linda Brill.

*Phil is the resident artist at the Calder Gallery in Hebden Bridge. He was elected a member of the Manchester Academy of Fine Arts in 2006.*

Our next exhibition is the **Open Christmas Exhibition**. Artists should submit photographs of 3x2D pieces by email to [designshop@deanclough.com](mailto:designshop@deanclough.com) and work will be selected by Linda Brill. Closing date for submissions will be 9th October 2011. Space is limited so please do not submit work larger than 60cm in any direction.

Dean Clough hosts much more than a visual arts programme... keep up to date and even book on-line for performance events at [www.deanclough.com](http://www.deanclough.com)



## **Viaduct Café COMEDY NIGHTS**

It's inevitable really. You find the best comedians on the UK comedy circuit (which is not at all the same as the TV circuit) and put them in a hundred-seater café — and it keeps selling out! Book early. It's the only way. Oh... and if you want to eat beforehand, ask us about 'the curry club'. The next four dates are: Sept 23rd, Oct 14th, Nov 18th and Dec 16th. Tickets £8.00. Group discounts available.

## **Viaduct Theatre WE ARE THREE SISTERS**

Northern BroadSides again combines with renowned author Blake Morrison — this time for an exquisitely drawn portrayal of the three Bronte sisters. Be sure to book early for the World Premiere of this much-anticipated production in Dean Clough's Viaduct Theatre (which will have been newly fitted with in-show heating!).

Directed by Barrie Rutter. Runs from September 9th to 17th.



## **Viaduct Café ALICE'S SECRETS IN WONDERLAND**

'Alice in Wonderland' is neither a nonsense story nor a drug-fuelled descent into the subconscious... it was a satire on 'modern' maths whose author (lest you forget) was a tutor in mathematics at Christ Church College, Oxford literary scholar and natural scientist Melanie Bayley is the next speaker at the **FREE Café Scientifique** event on Wednesday, October 5th. Find out more on [www.cafeschalfax.org](http://www.cafeschalfax.org).

## **Crossley Gallery JAZZ AT DEAN CLOUGH**

The Autumn season of the celebrated international jazz series at Dean Clough has yet to be announced... but it will be happening! And while it's not available yet on the box office we can at least whet your appetites by announcing that the latest project by that *eminence grise* of English jazz, Stan Tracey, will be featured during its premiere tour here on December 20th.



**BOX OFFICE: 01422 255266**

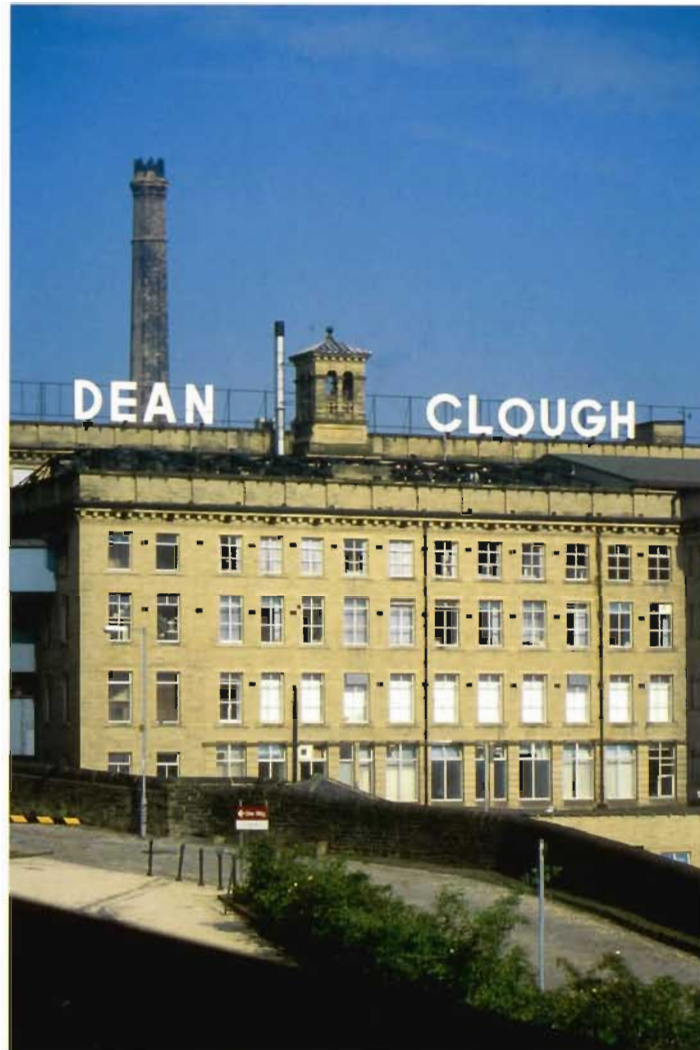


“Dean Clough must now be one of the most remarkable new centres of enterprise and artistic endeavour in the country.”

*The Independent*





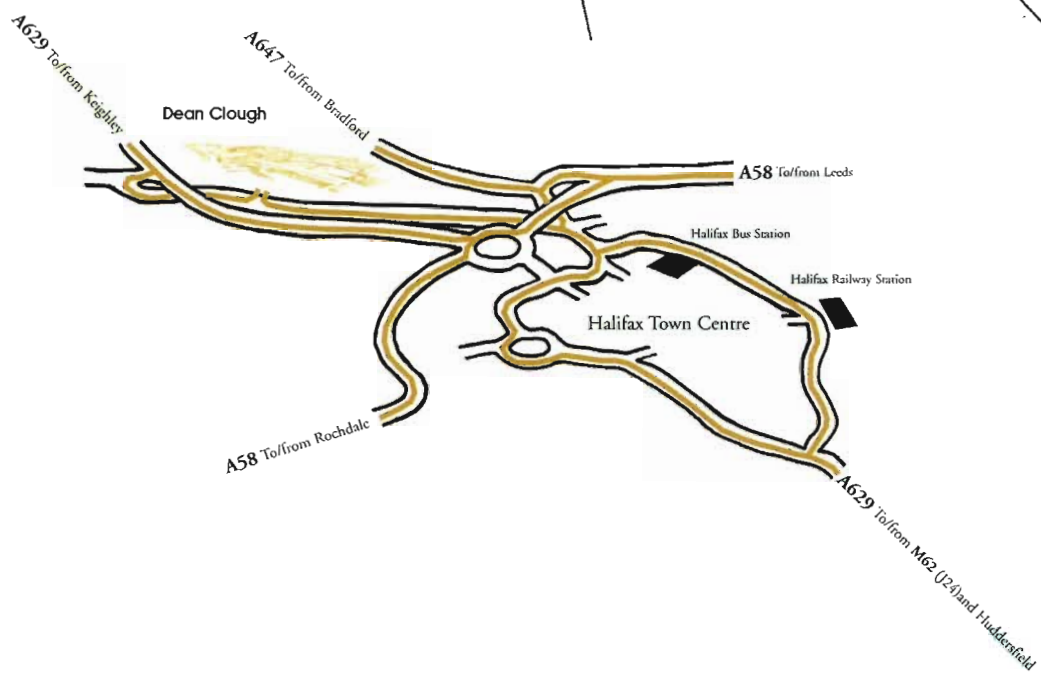
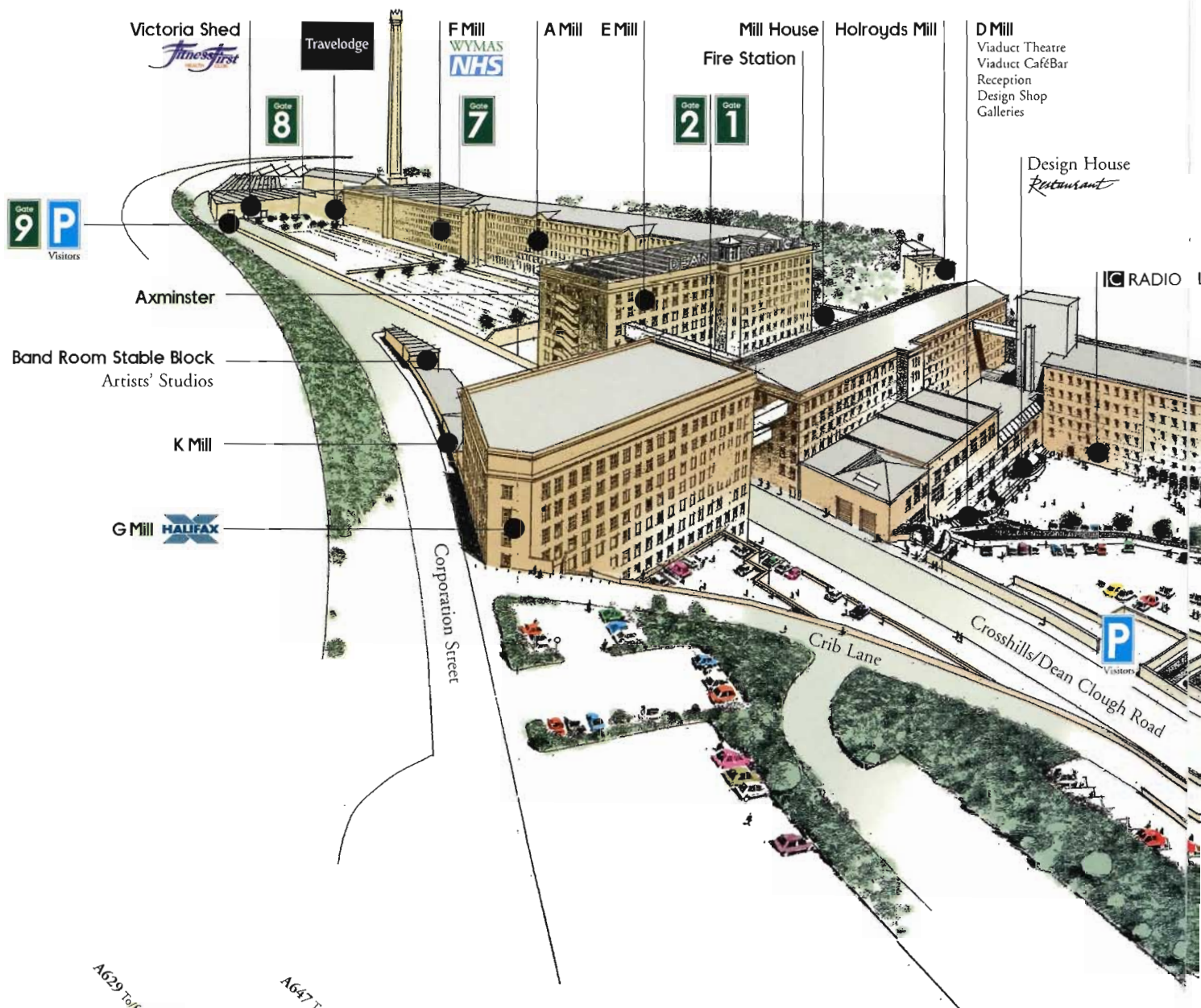


Dean Clough is a nationally-renowned landmark site in Halifax, West Yorkshire. Measuring two-thirds of a mile from end-to-end, it once hosted the largest carpet manufacturer in the world and since 1983 has come to be celebrated as a model of cultural regeneration.

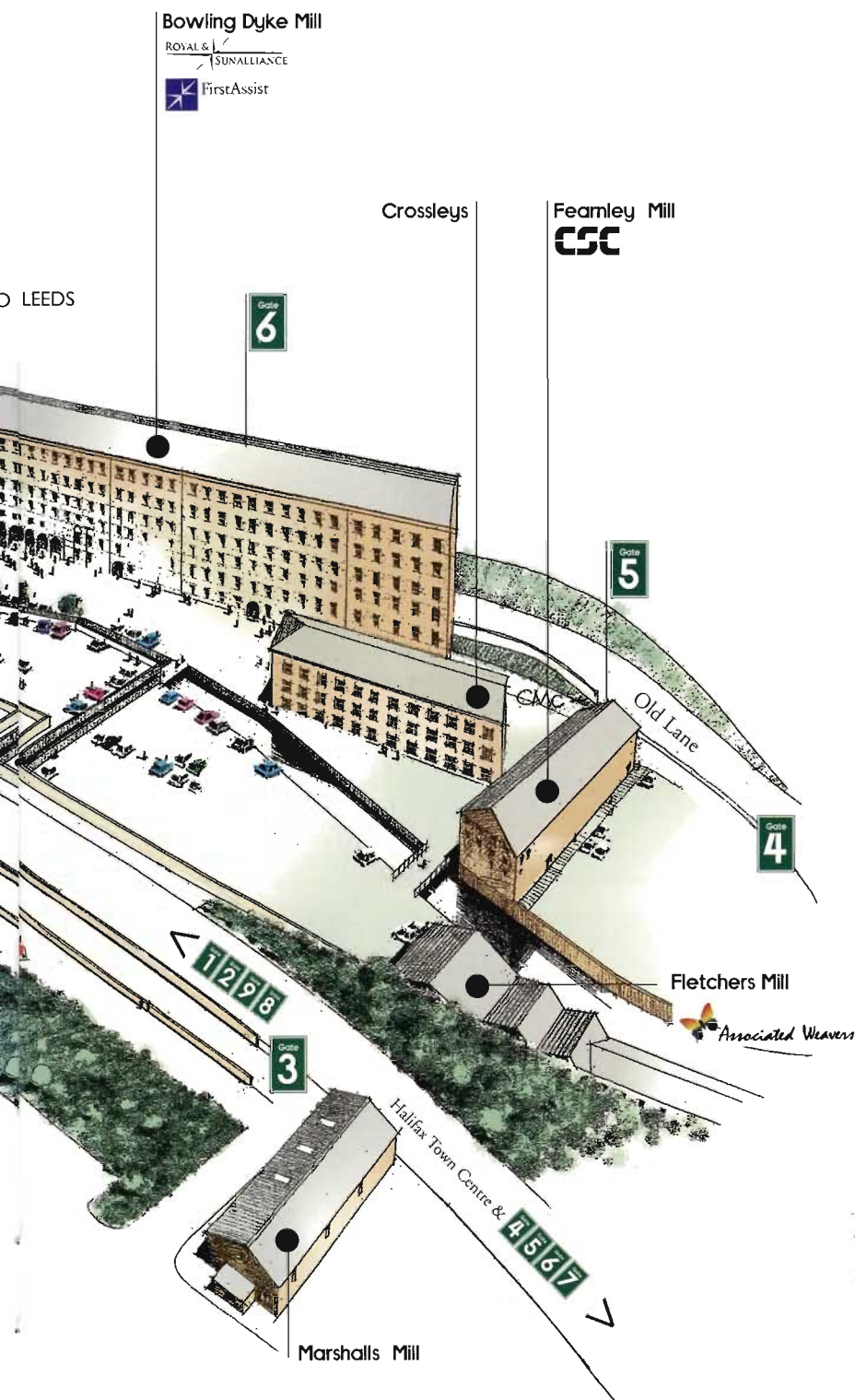
Dean Clough's thriving and varied business community employs more than 3,500 people and over 100 companies. Its 15 substantial buildings include restaurants, shops and leisure facilities, as well as CCTV-monitored car parks.

A pre-eminent centre for the arts, design and education Dean Clough's public spaces attract some 50,000 visitors a year and it regularly nets both regional and national media attention.









## Major companies and organisations associated with Dean Clough

Arts & Business Yorkshire  
 AW (Europe) Ltd  
 BBC Radio Leeds  
 Community Foundation for Calderdale  
 CSC Ra Group  
 Design Dimension Educational Trust  
 First Assist Group Ltd  
 Fitness First  
 Focus on Food  
 The Halifax Learning Zone  
 Halifax plc/HBOS  
 The Henry Moore Foundation  
 HM Customs & Excise (VAT)  
 Northern Orchestral Enterprises Limited  
 Northern Broadsides Theatre Company  
 One Call Centre  
 Royal and SunAlliance plc  
 RSA  
 (Royal Society for the Encouragement of Arts, Manufactures and Commerce)  
 Travelodge  
 WYMAS  
 Yorkshire Post Newspapers Ltd  
 Yorkshire Youth & Music



# DEAN CLOUGH

Dean Clough Limited  
 Halifax  
 West Yorkshire HX3 5AX

Telephone 01422 250250

Fax 01422 255250

e.mail [Dean.Clough.Ltd@DeanClough.com](mailto:Dean.Clough.Ltd@DeanClough.com)

website [www.deanclough.com](http://www.deanclough.com)



Among the 100 and more companies that enjoy the facilities at Dean Clough, some employ two people and others hundreds; some have been established for over 100 years, others are barely out of their start-up stage. The range of commercial activity at Dean Clough is hugely varied and includes, for example: banking, clothing manufacture, employment and specialist recruitment, government agencies, insurance, media, printing, product design, training centres and web-page design and development.

## DEAN CLOUGH Unique business accommoda



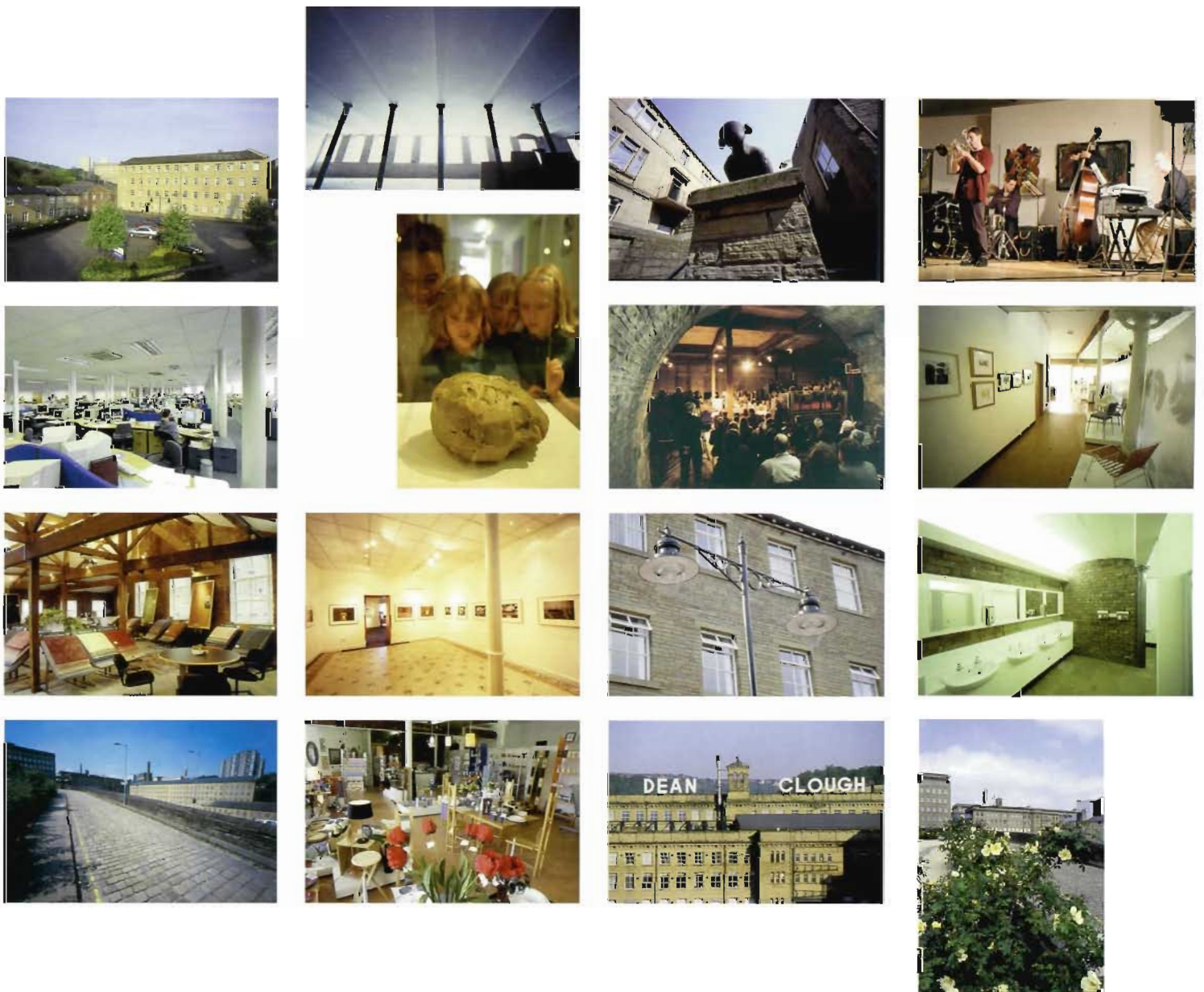
“There is no doubt that these can provide a uniquely attractive atmosphere



Such an invigorating and, in commercial terms, healthy mix is made possible by the diverse nature of the buildings at Dean Clough. This means that, in contrast to other business parks, many of our customers are able to maintain a distinctive site profile while capitalising on the nationally-recognised status of Dean Clough.

We look to serve this variety by seeking an individual relationship with each customer; offering a flexible range of terms and conditions that can be packaged to suit any business need.

## tion and facilities in a unique location ...



the buildings, and their environment ...  
for modern living and working.”

*HRH The Prince of Wales/Daily Telegraph*



# DEAN CLOUGH Business



## Hotel Accommodation

A 52-bedroom Travelodge Hotel is incorporated within Dean Clough and provides the ideal stop-over for visiting clients. Reservations can be made through the national Travelodge telephone number.



## Meeting Rooms

Dean Clough has a number of meeting rooms which can accommodate conferences or workshops. The Charles Eames Room, Mies van der Rohe Room and Wolff Olins Room are air-conditioned and furnished to the highest standard using classic design furniture. The Conference Gallery and Seminar Room also boast air conditioning and feature a changing selection of art from the Dean Clough galleries. All the rooms offer a quiet atmosphere and complete privacy. Slide projectors, OHPs, TV/Video, flip charts and refreshments are all available by arrangement.



## Communal Areas

The communal areas (meeting rooms, corridors, kitchens and toilets) within Dean Clough are maintained to a high standard. The corridors house the Dean Clough art collection, items from which are available on loan for customers' own offices.



## Catering

The award-winning Design House Restaurant provides an outstanding environment for both light meals and business lunches. The Viaduct CaféBar provides a relaxed atmosphere for coffee, drinks and light snacks. Halifax itself is exceptionally well-served for pubs and bars (The Dean Clough Inn is located just outside Gate 9).

“...we enjoyed the quiet atmosphere as well as the vibrant



facilities include . . .



#### Car Parks

Dean Clough provides on-site parking for approximately 1,100 vehicles with a further 600 spaces planned. This includes both long-stay and short-stay 'pay and display' areas. A car park card system is available, while reserved parking spaces can also be arranged. Closed Circuit Television is in operation within all car parks, which are also regularly patrolled by Dean Clough security officers. Dean Clough Limited is working towards the Secure Car Parks Awards Scheme, which is an accreditation by the local crime prevention service. Disabled badge holders parking is also provided.



#### Signage

To cater for the vast number of visitors to Dean Clough a complete on-site pedestrian and approach road traffic signage system is in operation. In addition to this there is a comprehensive series of Department of Transport brown tourist signs on all the major approach roads so ease of location is assured.



#### Inter-business services

Many customers based in Dean Clough provide business support services ranging from designers, printers and insurance advisors to office cleaners, a 24-hour taxi firm and a vehicle repair garage.

#### Post Office

Dean Clough has its own Consignia post office with a dedicated staff available to assist companies on site with specific needs. The Halifax sorting office is five minutes walk away.

galleries and the delicious food from the restaurant.” *The CBI*



“One of the  
region’s success  
stories...”

*Business Link Magazine*

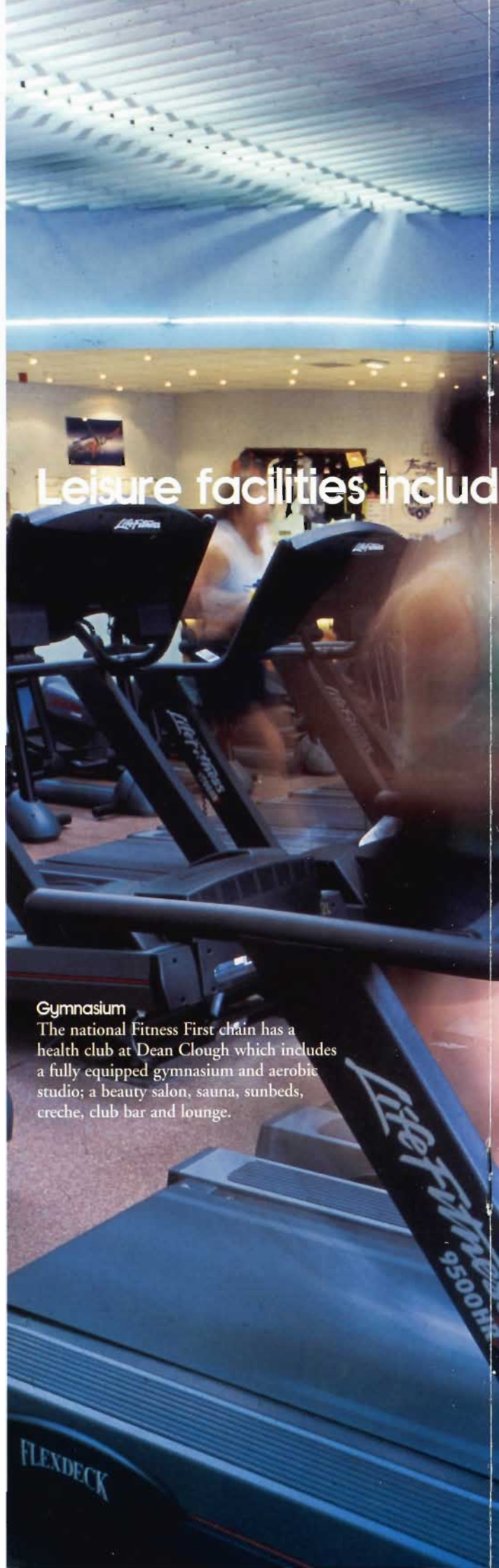
## DEAN CLOUGH

### Retail Provision

Although five minutes walk from Calderdale’s largest shopping centre, Dean Clough boasts the Design Shop, one of Yorkshire’s premier craft and interior design outlets, together with its own newsagents/general shop.



*The Design Shop*



Leisure facilities includ

### Gymnasium

The national Fitness First chain has a health club at Dean Clough which includes a fully equipped gymnasium and aerobic studio; a beauty salon, sauna, sunbeds, creche, club bar and lounge.





*Works by Alison Wilding displayed at Dean Clough by the Henry Moore Foundation*

### Galleries and Live Entertainment

Dean Clough is one of Yorkshire's most prominent arts centres and maintains a rolling programme of visual art exhibitions in its nine galleries. It also mounts a series of exceptional jazz and classical music events. The atmospheric 400-seat Viaduct Theatre frequently hosts events that have been feted both nationally and internationally, and is used by the award-winning Northern Broadsides to premiere their acclaimed series of classic and Shakespearean productions. There is, too, a notable legacy of international sculpture exhibitions in the imposing studio space beneath E Mill.



*Picture: Nobby Clark*

*The Viaduct Theatre*



*The Crossley Gallery*





## DEAN CLOUGH offers

Fully adaptable

### Space

from whole buildings of up to 13,000 m<sup>2</sup> (140,000 sq.ft) of floor space, to individual 'start-up' offices.

### Flexibility

Dean Clough's success is a testament to the durability and adaptability of its 19th Century architecture. The mill buildings have been variously converted to provide individual rooms, spacious open-plan environments, and discrete multi-floored complexes that through a sensitive use of vertical circulation incorporate offices, training rooms, computer centres and company restaurants.

### Quality

The sympathetic blend of modern design expectations with the site's architectural legacy is one of the distinguishing features of Dean Clough. Our success in achieving this aim can be readily seen in the public reception, gallery and communal areas.

### Design

Dean Clough is committed to achieving the highest level of modern design in all its building projects, both internally and externally. To this end it has established a policy of working closely with a specialist team of professionals. Projects are co-ordinated with a team of architects, surveyors, designers, engineers, landscapers and in-house management.

### Availability

The process of renovation at Dean Clough is ongoing and the final phase of development which includes both F Mill (six storeys totalling 9,949 m<sup>2</sup> (107,050 sq.ft.) and A Mill (six storeys totalling 6,832 m<sup>2</sup> (73,500 sq.ft.)) means that there are opportunities for customers interested in spaces that can be tailored to accommodate a workforce in excess of 1500 employees.

By complete contrast single offices are regularly made available within renovated mills from 15 m<sup>2</sup> (160 sq.ft).

Between these two extremes Dean Clough can offer integrated office suites that can incorporate kitchens or toilets (up to approximately 300 m<sup>2</sup> (3,200 sq.ft.); as well as discrete spaces in some of the smaller mills on site that range from 650 m<sup>2</sup> (7,000 sq.ft) to 930 m<sup>2</sup> (10,000 sq.ft).



“There is an air of exquisite tastefulness about the entire project.”

*The Independent on Sunday*





## a wide range of letting opportunities . . .

### Exceptional Service

including central reception, on-site management, 24-hour security and CCTV surveillance.

### Management

On-site management is a key element of Dean Clough's service. Our experienced and dedicated team is readily available to answer queries or resolve site-related issues throughout the working day.

### Reception

Dean Clough operates a central reception which is staffed throughout office hours and can act as a gateway for clients or complement the reception desks operated by customers elsewhere on site. Telephone, photocopying, facsimile and typing services are available.

### Telecommunications

BT, Mercury, General Telecom and Kingston facilities are all featured on site, while Dean Clough has its own internal phone system. ISDN and Broadband services are available and the local exchange is ADSL rated. Dean Clough customers who have exceptional digital communication requirements are free to make their own specialised arrangements with the nationally recognised suppliers

### Electricity

The power supply at Dean Clough is adequate for all modern office usage. Back-up generator facilities can be installed for major users.

### Security

24-hour security patrols are maintained both internally and externally throughout the year.

### CCTV

A 24-hour external Closed Circuit Television system is in operation throughout the site.

### Health and Safety

Dean Clough pays close attention to health and safety issues and a Health and Safety Co-ordinator is available to advise customers on general regulations in relation to the site and emergency procedures. All communal areas are designated as no-smoking.

### Disabled Access

Designated parking areas are maintained for people with disabilities and the major buildings feature lift access to all floors.

### Fully flexible Terms

that are negotiated individually to take into account customers' specific requirements and business expectations.

### Leases

Anything between 3 year and 25 year leases are available, with or without break clauses.

In each case a variety of rent review patterns can be arranged based on market shifts, R.P.I. (Retail Price Index) or set percentages.

Leases are offered on an F.R.I. (Fully Repairing/Insuring) basis or an effective F.R.I. basis (where repair costs are met by the customer but arranged through Dean Clough Administration). Internal Repairing Only leases are also available.

### Licenses

Quarterly or yearly licenses are available on an Internal Repairing Only basis and are inclusive of building and estate service charges.

Licenses are reviewed annually on an R.P.I./Inflation linked basis.



*For precise details of availability please call our letting information line*

**Freephone 0800 073 0004**

*or visit our website at*

**[www.deanclough.com](http://www.deanclough.com)**



Halifax is the major town in the Metropolitan Borough of Calderdale (pop. 193,000) and ideally located between Manchester and Leeds, with access to all the major road, rail and airport services in the North of England.

## Transportation . . .

### By road

Halifax is approximately 6 miles from the M62 from Manchester and Leeds exit 24 via A629 .

The M62 links Hull and Liverpool, and provides direct access to the M1, A1(M) and M6.

Driving distances to/from major UK Cities:

Birmingham	108 miles
Edinburgh	195 miles
Glasgow	205 miles
Leeds	18 miles
Liverpool	60 miles
London	205 miles
Manchester	26 miles
Newcastle	105 miles
Sheffield	40 miles

### Rail

Halifax station is 10 minutes walk from Dean Clough. Trains run every 15 minutes to/from Leeds and every 30 minutes to/from Manchester. The journey time to London is approximately 2½ hours.

Halifax is within easy reach of Leeds with its many international financial links, while Wakefield Europort (30 minutes on the M62) offers an International Intermodal Rail Freight Terminal with direct rail links to mainland Europe via the Channel Tunnel.

### Bus and Coach Services

Halifax bus station is 5 minutes walk from Dean Clough and offers full services to all the residential and urban centres in the region. National Express Coach services operate to London, Birmingham, Manchester etc..

### Air/Sea

Leeds/Bradford Airport	35 minutes
Manchester Airport	40 minutes

Flight times to/from major European cities:

Belfast	1hr 5 minutes
Dublin	1hr 10 minutes
Edinburgh	1hr
London <i>Heathrow</i>	55 minutes
Paris	1hr 25 minutes
Amsterdam	1hr 15 minutes
Brussels	1hr 25 minutes
Berlin	1 hr 55 minutes
Madrid	2 hr 30 minutes
Luxembourg	1hr 20 minutes
Frankfurt	1hr 45 minutes

### North Sea Ferry

Hull ferries via M62: 60 minutes

An aerial photograph of Halifax, showing a dense urban area with numerous buildings, streets, and green spaces. The town is situated in a valley, with hills visible in the background. The word "Halifax..." is overlaid in large white text across the middle of the image.

# Halifax...



A historic industrial town with a significant architectural heritage, it is nonetheless located in the heart of the Yorkshire Pennines with easy access to the Lake District, the Yorkshire and Derbyshire Dales and attracts a substantial degree of tourism.

## Amenities . . .

### Tourism and Leisure

Calderdale has close links with the Brontës, while Eureka! The Museum for Children attracts 250,000 visitors a year. Halifax's Markets and Museums, including the 18th Century Piece Hall, are nationally renowned.

The Borough has one of the UK's most extensive rights-of-way networks and it excels in outdoor leisure opportunities. There are two ski/mountain boarding centres, ten golf courses, and seven horse riding clubs, while other supported activities include abseiling, climbing, hang-gliding and white water canoeing.

## \*Halifacts . . .

### Top major employers

HBOS/Halifax plc	4,032 employees
Marshall's plc	982 employees
Provident Insurance	900 employees
Royal & SunAlliance plc	850 employees
Nestlé (UK) Limited	800 employees
Crosslee plc	600 employees

### Occupational Groups

Management & admin	15%
Professional & technical	16%
Clerical & secretarial	14.7%
Craft & related	16.8%
Personal & protective	8.6%
Sales	6.7%
Plant & machine operatives	14.5%

### Average House Prices

Terraced	£41,624
Flat/Maisonette	£56,737
Semi-detached	£61,175
Detached	£121,483

## Europe and overseas . . .

### European companies in Calderdale include:

ABB Control Valves *Switzerland*  
Freudenberg *Germany*  
Intentia *Sweden*  
Valeo Transmissions *France*  
Nestlé *Switzerland*

### Other international companies include:

Crosrol *Canada*  
Interface *US*  
Simpson International *US*  
Mitutoyo *Japan*

*\*Figures source: Calderdale MBC, September 2001*

DEAN CLOUGH



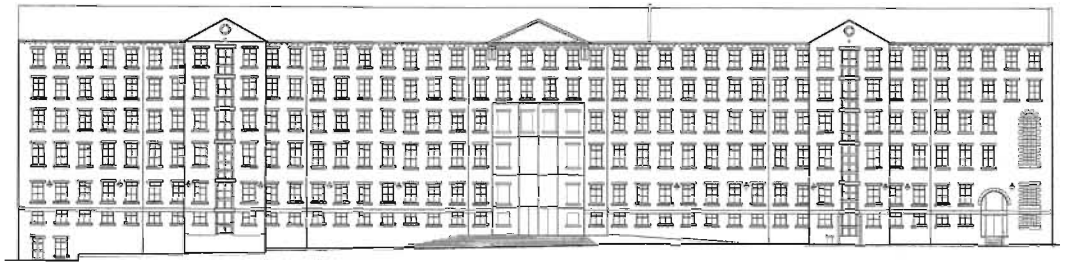
*Picture: John Morrison*



### **AMill 1841**

*One of the earliest mills on the site. Originally built in two parts known as A and B Mills.*

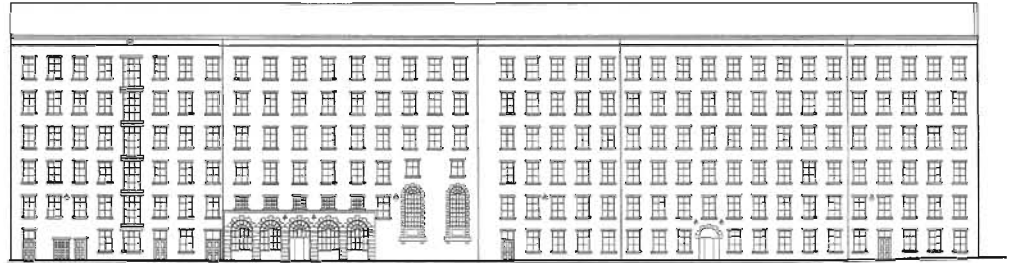
6,832 m<sup>2</sup> (73,500 sq.ft) of space on 6 floors



### **Bowling Dyke Mill c1850**

*Not an original Crossley mill. It was built and owned by Jonathan Ackroyd who was of equal status and importance to the Crossleys. Built to replace an earlier mill destroyed by fire.*

8,782 m<sup>2</sup> (94,500 sq.ft) of space on 7 floors



### **Crossleys Built 19th Century**

*Overlooking the brook which runs through Dean Clough and named after the founders of the site.*

942 m<sup>2</sup> (10,200 sq.ft) of space on 3 floors



## **DEAN CLOUGH**

### **DMill 1854**

*Built for warehousing and became the administrative office for the Crossleys.*

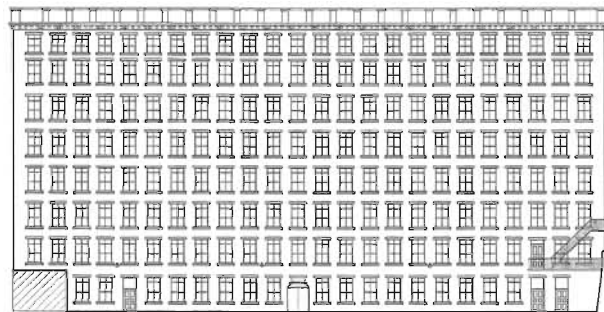
12,755 m<sup>2</sup> (137,250 sq.ft) of space on 7 floors



### **EMill 1857**

*Built on the site of the original mill occupied by John Crossley & Sons, it was used for manufacturing Persian style carpeting and later housed the design offices on the 3rd floor.*

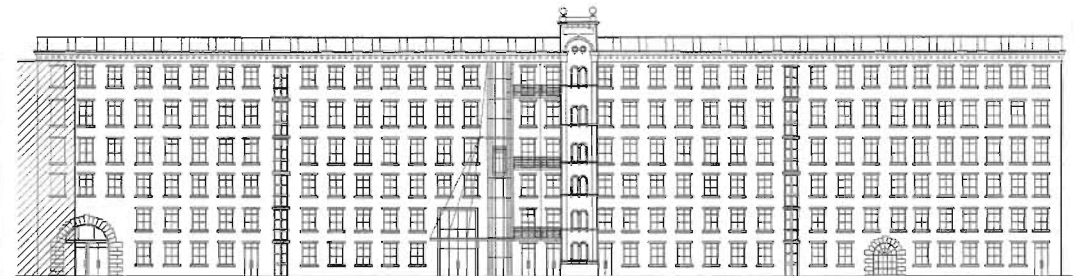
7,447 m<sup>2</sup> (80,200 sq.ft) of space on 9 floors



### **FMill Annex 1848**

*Warehouse/Boiler House. A fire in 1904 damaged the upper floor, it is not known whether the whole of the building was rebuilt or just two upper floors added.*

2,988 m<sup>2</sup> (32,150 sq.ft) of space on 6 floors



### **FMill 1820**

*This was known as the Flax Mill. A jute spinning plant was installed in 1929 to be superseded by a woollen plant c1954.*

9,949 m<sup>2</sup> (107,050 sq.ft) of space on 6 floors





### Fire Station 1841

*Used as a fire station for the working mills, it was originally part of A Mill boiler house and was finally used as a dyeing and warehouse facility.*

500 m<sup>2</sup> (5,400 sq.ft) of space on 2 floors

*Together with the major buildings illustrated there are three lesser buildings on site:*

**Band Room/Stables**

**T Block**

**D Mill Sidings**

*for which there are no front elevations but which nevertheless contribute to the overall history of Dean Clough.*

## A historical survey . . .

As long ago as Roman times Halifax was renowned for its textiles thanks to the quality of the Pennine water. One of the oldest buildings on the Dean Clough site actually pre-dates the economic fervour of the 19th Century.

The development of the power loom – one of the key technological engines of the industrial revolution – was pioneered on the Dean Clough site by its founder, John Crossley and Sons. By the beginning of the 20th Century the Crossleys had prospered to the extent that their carpet factory catered to a global market and was the largest of its kind in the world.

The Crossleys were also forward-looking employers in the best tradition of Victorian philanthropy.

We believe that Dean Clough's modern day pre-eminence is also founded on a trend-setting philosophy that tackles problems constructively, and which places a premium on communication and flexibility.

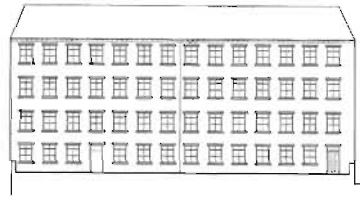
Most importantly, Dean Clough's close association with the creative sector reflects a conviction that in the 21st Century the cultural development of the workforce will not be merely a measure of wealth but a vital, contributing factor to economic success.



### Axminster 1854

*Originally attached to the New Shed and used for "Gripper" and later Axminster carpet weaving.*

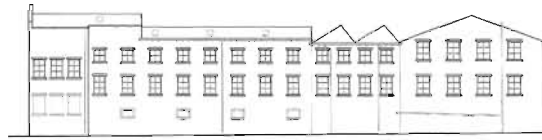
668 m<sup>2</sup> (7,200 sq.ft) of space on 4 floors



### Fearnley Mill Built 19th Century

*Not an original Crossley Mill, Fearnley Mill was purchased by Dean Clough to meet customer demands for space in 1989.*

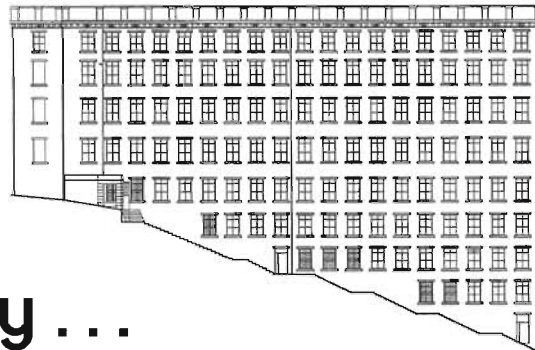
1,876 m<sup>2</sup> (20,200 sq.ft) of space on 5 floors



### Fletchers Mill Built 19th Century

*Not an original Crossley Mill, Fletchers Mill was purchased by Dean Clough at the same time as Fearnley Mill.*

777 m<sup>2</sup> (8,400 sq.ft) of space on 2 floors



### G Mill 1867

*The last of the great mills built by the Crossleys, with a commanding profile and bridgeway links to D Mill.*

10,817 m<sup>2</sup> (116,400 sq.ft) of space on 10 floors



### Holroyds Mill Built 19th Century

*The second of Jonathan Ackroyd's mills purchased by Dean Clough to meet customer demands for space. Built in an imposing quarried site.*

969 m<sup>2</sup> (10,500 sq.ft) of space on 3 floors



### K Mill 1870

*An architecturally attractive mill, built into the hillside with both top and bottom floor access.*

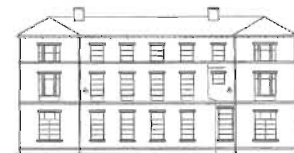
771 m<sup>2</sup> (8,300 sq.ft) of space on 5 floors



### Marshalls Mill Built 19th Century

*Not an original Crossley Mill. Named after Ken Marshall from whom it was purchased by Dean Clough in 1990.*

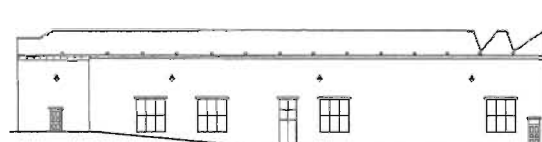
856 m<sup>2</sup> (9,200 sq.ft) of space on 5 floors



### Mill House 1849

*Originally the main accounts and pay office for Crossleys.*

732 m<sup>2</sup> (7,900 sq.ft) of space on 3 floors

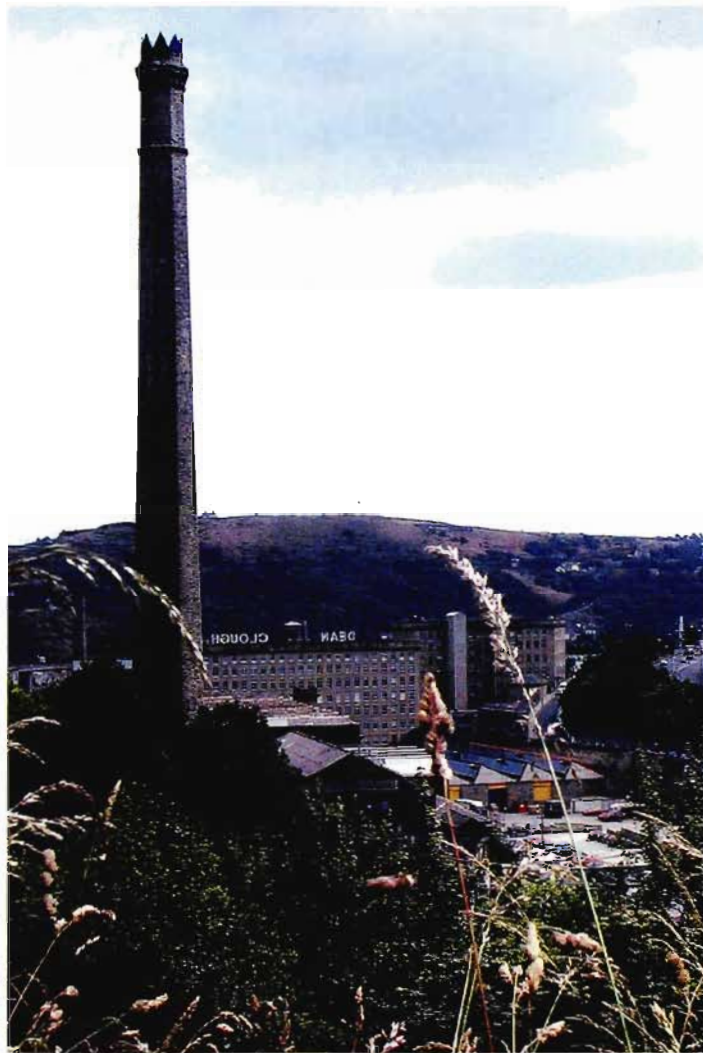


### Victoria Shed 1884

*Built to accommodate Broadloom carpet weaving machines.*

5,935 m<sup>2</sup> (6,400 sq.ft) of space on 1 floor





### Why 'Dean Clough'?

'Dean' comes from the Old English word 'denu', meaning valley (or, indeed, someone who lives in a valley). 'Clough' can be traced back to another Old English word 'cloh' which means a ravine. Dean Clough, therefore, means a ravine running through a valley.